

# Rebels of the Moon

## DOULA CARE PACKAGES



### THE CALENDULA PACKAGE

A virtual consultation, educational documents about pregnancy, birth, & labor. In person labor support where you plan to birth, up to two hours of postpartum support after your baby arrives.

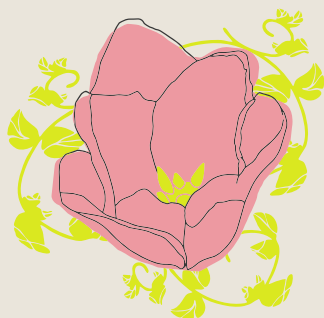
*\$1,200*



### THE ZINNIA PACKAGE

Prenatal support beginning once the contract is signed. **Four prenatal** meetings (three in person and one virtual). In person labor and birth support, up to two hours of postpartum support after your baby arrives and **one at home postpartum check-in.**

*\$1,800*



### THE ROSE PACKAGE

Prenatal support beginning once the contract is signed. **Four prenatal** meetings (three in person and one virtual). In person labor and birth support, up to three hours of immediate postpartum support and **two in-home** postpartum check-ins.

*\$2,500*

# Rebels of the Moon

## DOULA POSTPARTUM CARE PACKAGES

### POSTPARTUM CARE

Support includes care of your family, light household chores, meal prep, newborn education, and helpful tips/techniques. With the most important support being a shoulder to lean on, an ear to hear your voice and a heart to provide non-judgmental care. In most cases postpartum support is done within the first month of welcoming your baby, but options of support are always open for discussion. It is also always an option to extend your care.

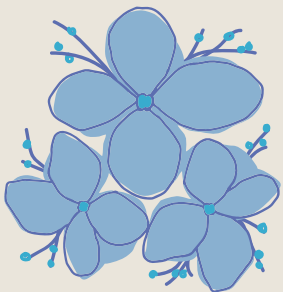
*50/hr*

### THE TULIP PACKAGE



Twelve hours of in-home postpartum support.

### THE FORGET ME NOT PACKAGE



15 hours of in-home postpartum support